

Welcome to MOE Kindergarten @ Valour

Open House 2026

About our MOE Kindergarten (MK)!

01

**MK
Programme**

02

**MK Learning
Environment**

03

**Kindergarten
Care (KCare)**

04

**A Smooth
Transition
into MK**

05

**Registration
Exercise**

06

Resources

MK Programme

2 Levels

Kindergarten 1
Kindergarten 2

3 Mother Tongue Languages

Chinese
Malay
Tamil

4 Hours

AM Session
8am – 12pm

PM Session
1pm – 5pm

4 Terms

Follows MOE
school calendar
of four terms and
school holidays

For parents requiring full-day childcare programme, we also offer Kindergarten Care (KCare) in the afternoon during school term and full day KCare services during school holidays.

**PM session availability is subjected to demand.*

MK Curriculum

Designed by MOE curriculum specialists and educators with experience in early childhood education and primary school curriculum



Anchored on our **belief** that children are **joyful, curious, active and competent learners**



Guided by key teaching and learning principles in **MOE's Nurturing Early Learners Framework**



Distinctive Singapore flavour for children to learn in meaningful contexts



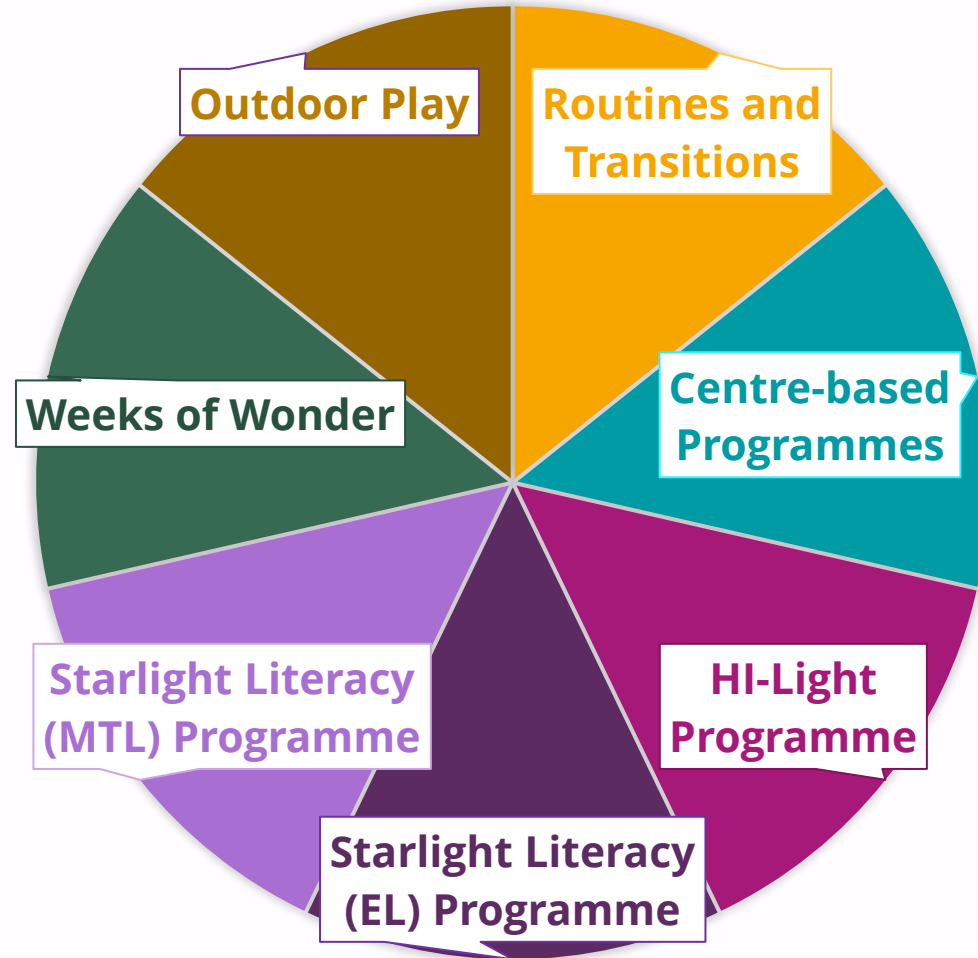
Strong emphasis on holistic development and learning of two languages through **two flagship programmes** HI-Light and Starlight (EL & MTL) Programmes

MK Curriculum

The two-year MK curriculum is intentionally designed to ensure that our children are ready to move on to primary school and for life-long learning.

Develops **ownership of learning, joy of self-motivated learning**, confidence and positive dispositions towards learning

Ensures continuity in pedagogy
e.g. Use of shared-book approach (SBA) in both Starlight (EL) and Stellar (P1-P3)



Develops **responsibility, acceptable behaviour, focus and self control**

Centre programmes **reinforce key knowledge, skills and dispositions** covered in flagship programmes & nurture positive learning dispositions

Puts at the forefront **values, social and emotional competencies and learning dispositions &** focuses on **holistic development** to ensure children are ready to move to primary schools, and lay the foundation for lifelong learning

MK Curriculum

At MK, we believe in **developmentally-appropriate teaching and learning practices** while ensuring **readiness for learning in primary school and beyond.**



Developed hand
(about age 7)

5-year-old

For example, MK children are given ample opportunities to strengthen their finger muscles, hand-eye coordination and core body strength. They are also given many meaningful opportunities to practise writing and copying. However, hand maturation and dexterity takes time and is dependent on each child's physical development (e.g., whether hand skeletal structure is fully developed to shape letters properly). Hence, it is not expected for all children to be able to perfect their penmanship skills by the end of K2.

When we go according to children's pace and provide them with meaningful contexts to learn and practise, they will have the joy of learning and be better able to draw connections and apply their learning appropriately.

We encourage parents to support your children's learning based on their pace of development!

HI-Light Programme

Designed to support **holistic development** of children by nurturing in them:



- Values, social and emotional skills, positive attitudes to learning and executive functioning skills
- Knowledge and skills across the following five learning areas through an **integrated approach**:
 1. Aesthetics and Creative Expression
 2. Discovery of the World
 3. Health, Safety and Motor Skills Development
 4. Language and Literacy
 5. Numeracy

Starlight Literacy (EL and MTL) Programme

Designed to nurture **early childhood bilingualism** in English and Mother Tongue Language (Chinese, Malay, Tamil)



- Focuses on developing children's interest in language learning, listening, speaking and early reading and writing skills
- Uses Big Books, songs and games set in the local context to make learning fun and meaningful
- Provides opportunities for children to communicate in EL and MTL with confidence and be aware of local tradition and customs
- Encourages families to be involved in activities to enthuse children in language learning

Weeks of Wonder (WoW)

Designed to promote **collaborative, self-motivated learning**



- Children will work together with their friends to investigate topics that interest them that culminates in a WoW project at the end of each term.
- Through the projects, they learn decision-making, collaborative, communication and problem-solving skills.
- In a year, children complete 2 WoW projects in English and 2 in their Mother Tongue Language.

Sample MK Timetable

Time	Monday	Tuesday	Wednesday	Thursday	Friday
7.00 – 7.35 a.m.	Early Arrival (For children with KCare and require early arrival)				
7.35 – 7.45 a.m.	Transition to Classroom (There will be no health check during this time)				
7.45 – 8.00 a.m.	Arrival and Health Check				
8.00 – 8.10 a.m.	Welcome and Circle Time (10 min)				
8.10 – 8.40 a.m.	Outdoor Play (30 min)				
8.40 – 9.20 a.m.	Starlight Literacy (English Language) Programme (40 min)				
9.20 – 9.40 a.m.	Snack Time (20 min)				
9.40 – 10.00 a.m.	Learning Centre (20 min)				
10.00 – 10.50 a.m.	HI-Light Programme (50 min)				
10.50 – 11.50 a.m.	Starlight Literacy (Mother Tongue) Programme (60 min)				
11.50 – 12.00 p.m.	Transition & Dismissal (10 min)				

Learning Journeys



MK Learning Environment

MK Learning Environment

Safe and inviting indoor and outdoor spaces intentionally designed to support children's learning

Every space a learning space

Creative use of available space to encourage children to discover and explore their surroundings

Flexible use of space, furniture and resources

Tap on everyday areas and regularly repurpose materials for new learning experiences

Every space provides opportunities for purposeful play and quality interaction

Promotes learning through a variety of play, hands-on and interactive learning activities facilitated by teachers or initiated by children

Indoor Spaces

Thoughtfully designed classrooms and rich resources to support teaching and learning through play



Conducive and stimulating classroom environment to promote holistic development



Role play materials provide a context for children to use language and develop communication skills



Variety of manipulatives to support development of fine motor skills, spatial awareness and problem-solving skills

Outdoor Spaces

Carefully designed to provide a variety of play experiences;
children spend at least 30 minutes outdoors daily!



Water play features that encourage children to be little investigators, exploring properties of water



Playground equipment that develops children's movement skills and confidence



Garden with features that engage children in sensory experiences

MOE Kindergarten Fee

- The monthly fee for MK in 2026 is:
 - \$160 for Singapore Citizens
 - \$320 for Singapore Permanent Residents
- Fees are also payable during the school holidays in June and December as fees are calculated on an annual basis and spread over 12 months.
- There are no additional out-of-pocket costs for complementary programmes such as field trips.



Kindergarten Fee Assistance Scheme (KiFAS)

About the Early Childhood Development Agency (ECDA)

ECDA, hosted under the **Ministry of Social and Family Development (MSF)**, is the regulatory and developmental agency for the early childhood sector in Singapore. ECDA oversees key aspects of children's development below the age of seven across both private kindergartens and childcare centres.

What is ECDA KiFAS?

The Kindergarten Fee Assistance Scheme (KiFAS), which is **administered by ECDA**, is a means-tested subsidy to assist families in subsidising kindergarten fees.

Eligibility Criteria

- Child must be a Singapore Citizen **and**
- Gross monthly household income of \$12,000 and below or per capita income of \$3,000 and below for larger families (5 or more family members who are related by blood, marriage, and/or legal adoption, and who share the same registered residential address)

Kindergarten Fee Assistance Scheme (KiFAS)

The KiFAS subsidies for the various household income tiers are outlined below:

Gross Monthly Household Income	Gross Per Capita Income	KiFAS Subsidy
\$3,000 and below	\$750 and below	\$159
\$3,001 - \$4,500	\$751 - \$1,125	\$148
\$4,501 - \$6,000	\$1,126 - \$1,500	\$105
\$6,001 - \$7,500	\$1,501 - \$1,875	\$85
\$7,501 - \$9,000	\$1,876 - \$2,250	\$65
\$9,001 - \$10,500	\$2,251 - \$2,625	\$45
\$10,501 - \$12,000	\$2,626 - \$3,000	\$15

* Based on the MK School Fee of \$160 per month and subject to a minimum co-payment amount from the parents.

For info: As mentioned in PM's 2026 Budget Speech, the income eligibility of preschool subsidies will be raised from 1 Jan 2027. More information will be shared by MSF/ECDA in due course.

Kindergarten Fee Assistance Scheme (KiFAS)

Minimum Attendance Requirement

- The child must **attend at least one day per month** at the kindergarten to receive subsidies, unless a valid medical certificate (MC) covers the entire month's absence (subject to ECDA's approval)..
- Failure to meet the attendance requirement will result in the full kindergarten fee being payable for that month.

Kindergarten Care (KCare)

For parents who require a full-day service for their child

Kindergarten Care (KCare)

- Provides care services in a safe and conducive environment for children to play, explore and discover through specially designed environments with carefully chosen resources^
- Time set aside for adequate rest
- Autonomy for children to decide what and how they want to play
- Situated within MK premises
- Operates till 7 p.m., from Mondays to Fridays, including school holidays*
- Operated by MOE-appointed service providers, based on MOE requirements and guidelines



*Closes for 6 days each year, in addition to gazetted public holidays, Teachers' Day and Children's Day.

KCare Programme

a) Modular Activities

- Art & Craft
- Cookery
- Gardening
- Music, Movement & Dramatisation
- Sand & Water Play
- Tinkering

b) Free Play

- Construction & Manipulative Free Play
- Dramatic Free Play
- Outdoor Free Play
- Sand and Water Free Play

c) Dedicated Reading Time

- Daily dedicated reading time
- Nurture a love for reading and develop good reading habits

Sample KCare Timetable (School Terms)

Time	Activities
8.00 a.m. – 12.00 p.m.	MOE Kindergarten
12.00 p.m. – 12.30 p.m.	Arrival and Health Check
12.30 p.m. – 2.30 p.m.	Lunch, Wipe down, Rest / Nap
2.30 p.m. – 3.30 p.m.	Modular Activities / Indoor Free Play
3.30 p.m. – 3.45 p.m.	Afternoon Snack
3.45 p.m. – 4.00 p.m.	Dedicated Reading Time
4.00 p.m. – 5.00 p.m.	Modular Activities (Indoor/Outdoor) / Indoor / Outdoor Free Play
5.00 p.m. – 7.00 p.m.	Indoor / Outdoor Free Play, Quiet Time and Dismissal

Note:

- *MK will receive KCare children at arrival between 7.00 a.m. -7.35 a.m. and 7.45 a.m. – 8.00 a.m.*
- *Both MK and KCare staff will work out an arrangement for the smooth handover of the children.*
- *Outdoor activities can only be conducted after 4.00 p.m.*

Sample KCare Timetable (School Holidays)

Time	Activities
7.00 a.m. – 9.00 a.m.	Arrival and Health Check - Breakfast and Indoor Free Play
9.00 a.m. – 11.00 a.m.	Holiday Activities (Outdoor) + Morning Snack
11.00 a.m. – 11.15 a.m.	Dedicated Reading Time
11.15 a.m. – 12.15 p.m.	Modular Activities (Indoor)
12.15 p.m. – 2.45 p.m.	Lunch, Clean-up, Rest/Nap
2.45 p.m. – 3.00 p.m.	Dedicated Reading Time
3.00 p.m. – 3.30 p.m.	Afternoon Snack
3.30 p.m. – 5.00 p.m.	Holiday Activities (Indoor)
5.00 p.m. – 7.00 p.m.	Indoor / Outdoor Free Play, Quiet Time and Dismissal

**Outdoor activities can only be conducted before 11.00 a.m. and after 4.00 p.m.*

KCare Fees

Singapore Citizen	Singapore Permanent Resident
Up to \$265 (Fee shown above is after \$150 basic subsidy*)	Up to \$415

You may utilise the KCare Additional Subsidy Eligibility Calculator available on the MOE website to determine if your child qualifies for the KCare additional subsidy:

<https://moe.gov.sg/preschool/moe-kindergarten/kindergarten-care>

As mentioned in PM's 2026 Budget Speech, the income eligibility of preschool subsidies will be raised from 1 Jan 2027. More information will be shared, and the adjustment will be reflected in the Eligibility Calculator in due course.

* Child must meet the minimum attendance requirement of one day per month at the centre to receive subsidies, unless a valid medical certificate (MC) covers the entire month's absence (subject to MOE's approval).

A Smooth Transition to MK

Kindergarten 1 (K1) Orientation

- You and your child will be invited to an orientation session before the start of the K1 year, where you will meet with the kindergarten teachers and classmates. This will take place sometime in Oct / Nov 2026. More information will be shared at a later time.
- This session will help to familiarise your child with the new learning environment in the MK.



First Day of School

- For the first day of school, you are welcome to accompany your child to the MK to help him or her through the routines in the kindergarten.
- Teachers at the MK will keep a look out for children who experience adjustment challenges and work together with the parents to support the child's transition to the new learning environment.



Partnering Families & the Community

Strong partnerships with families and the community enrich children's learning experiences

- Effective communication
- Active engagement
- Meaningful collaboration



Location within a Primary School

Supports smooth transition to primary school



Familiarising MK children with primary school environment and routines



Close collaboration between primary school and MK educators to ensure common understanding of children's development



Joint activities between primary school and MK to provide opportunities for MK children to interact with primary school teachers and students 30

Leading and Inspiring Families of Early Learners@MK

Leading and Inspiring Families of Early Learners @ MOE Kindergarten (LIFE@MK)

- A series of centre-based workshops conducted by MK for parents
- Provides practical tips and advice on how parents can support children's learning at home
- Topics focus on holistic development, language development, how children learn and supporting children's transition from pre-school to primary school



MK-Early Years Centre (EYC) Partnership

- Partnering three Anchor Operators:
 - E-Bridge Pre-School (E-Bridge)
 - NTUC My First Skool (MFS)
 - PCF Sparkletots Preschool (PCF)
- In this partnership, children aged two months to four years attend the partner EYC.
- Eligible Nursery 2 (N2) children enrolled in our partner EYC are guaranteed a place at MK@Valour and can choose to enroll at MK@Valour to continue their K1 and K2 programme.
- Our MK's partner EYC is:
 - My First Skool @ 2 Punggol Drive

Journey from Early Years Centre to MOE Kindergarten
Find out how your child can enjoy a seamless transition from an Early Years Centre to MOE Kindergarten and beyond!

Introduction
MOE Kindergarten partners selected Anchor Operators to provide a continuum of quality and affordable preschool education for children aged 2 months to 6 years.

► 2 months - 4 years old
Your child attends an Early Years Centre (EYC) operated by one of these Anchor Operators – E-Bridge Pre-School, NTUC My First Skool and PCF Sparkletots.

► 5 - 6 years old
Eligible children in the EYCs are guaranteed a place at a partner MK. The MKs and partner EYCs work closely to support the children and promote continuity of learning from EYC to kindergarten.

“With the MK-EYC transition efforts, my child was well-prepared to feel at ease going into a new environment. He was really excited to continue his learning journey from EYC to MK!”
- Parent of Abeer, from MK@Wellington and its partner EYC

► From MK to Primary School
MKs focus on holistic development to lay a strong foundation for children to learn, easing their transition to primary school. MK children also enjoy priority admission to the primary school that the MK is located in.

Find out more at www.moe.gov.sg/preschool/moe-kindergarten/mk-eyc

Ministry of Education SINGAPORE

MOE KINDERGARTEN

Why Choose MK?

- Quality & Affordable Kindergarten Education
- Caring & Skilful Educators
- Spacious & Rich Learning Environment
- Holistic Curriculum in English & all Three Mother Tongue Languages
- Smooth Transition to Primary School



Registration Exercise

Info on MK Registration Exercise

- Online registration for 2027 K1 admissions for both Open Admissions (OA) and Early Years Centre (EYC)* children will open from 9 a.m. on Monday, 23 March 2026 and close at 4.30 p.m. on Tuesday, 31 March 2026^.
- Open to Singapore Citizen and Permanent Resident children born between 2 Jan 2022 and 1 Jan 2023 (both dates inclusive).
- Register your child at <https://go.gov.sg/mk-register> during the registration period.
- You will be notified of the OA# registration outcome via email by 1 Jun 2026.

*Eligible children from EYCs will receive an MK notification letter through the EYC that your child is enrolled in. More information on the registration process will be provided in the notification letter. If you decide to register your child in a non-partner MK, you should apply via Open Admissions (OA) application form. Your OA application will be subject to the same conditions as all other OA applications.

^Outside this registration period, parents can contact the MK directly to check for vacancies. If you miss the online registration period, you can contact your preferred MK directly to submit a waitlist application. Admission is subject to availability of places.

#For children who are offered a K1 place in the partner MK via EYC admissions, you will need to accept the offer by the specified deadline indicated in your outcome letter.

Share your feedback with us!



<https://go.gov.sg/feedbackmkoh2026>

Resources

We get you ready for your preschool journey

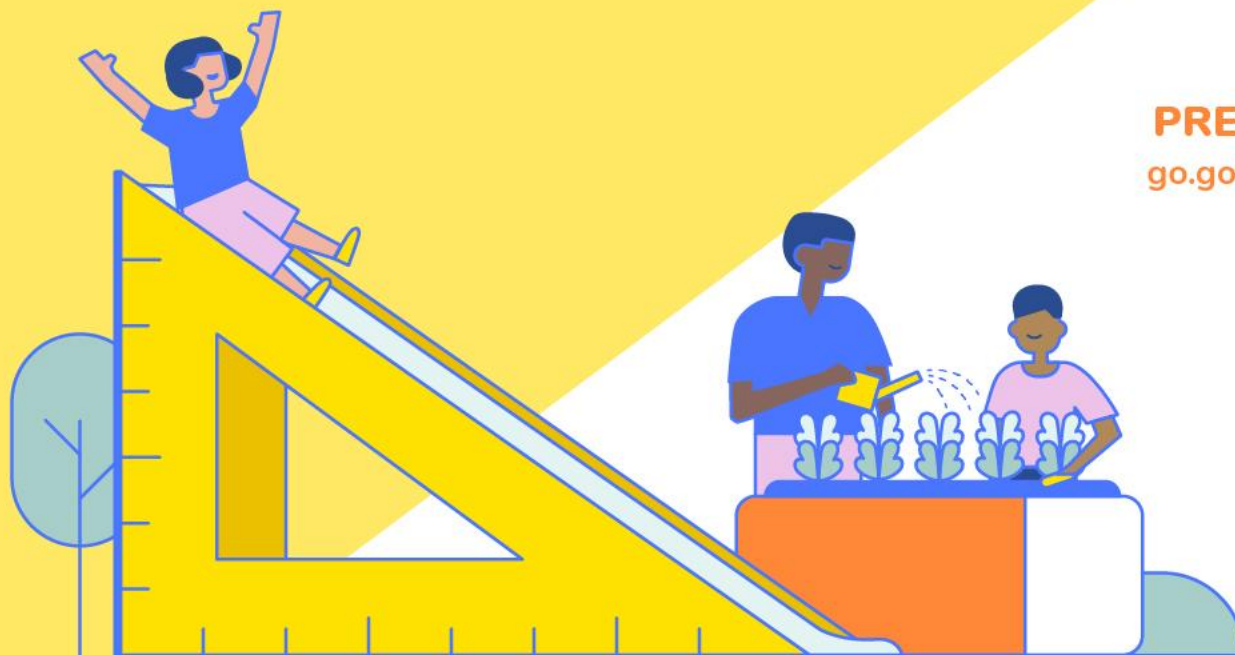
SCHOOLBAG
PARTNERING YOU ON YOUR EDUCATION JOURNEY

Hear from fellow parents and MOE educators on how your child can get more out of their school experiences. Subscribe to [Schoolbag.edu.sg](https://schoolbag.edu.sg) today!

SCAN TO SUBSCRIBE



go.gov.sg/schoolbag-subscribe



**CHECK OUT
SCHOOLBAG'S
PRESCHOOL SECTION:**
go.gov.sg/schoolbag-preschool

Brought to you by
MOE Communications
and Engagement Group

Check out these resources from MOE

Parent Kit



Parent Kit

www.moe.gov.sg/parentkit

Each Parent Kit issue contains bite-sized actionable tips with supporting resources for parents to help them support their child in their education journey.

MOE Social Media Platforms



www.instagram.com/parentingwith.moesg



www.facebook.com/moesingapore



www.instagram.com/moesingapore



www.youtube.com/moespore

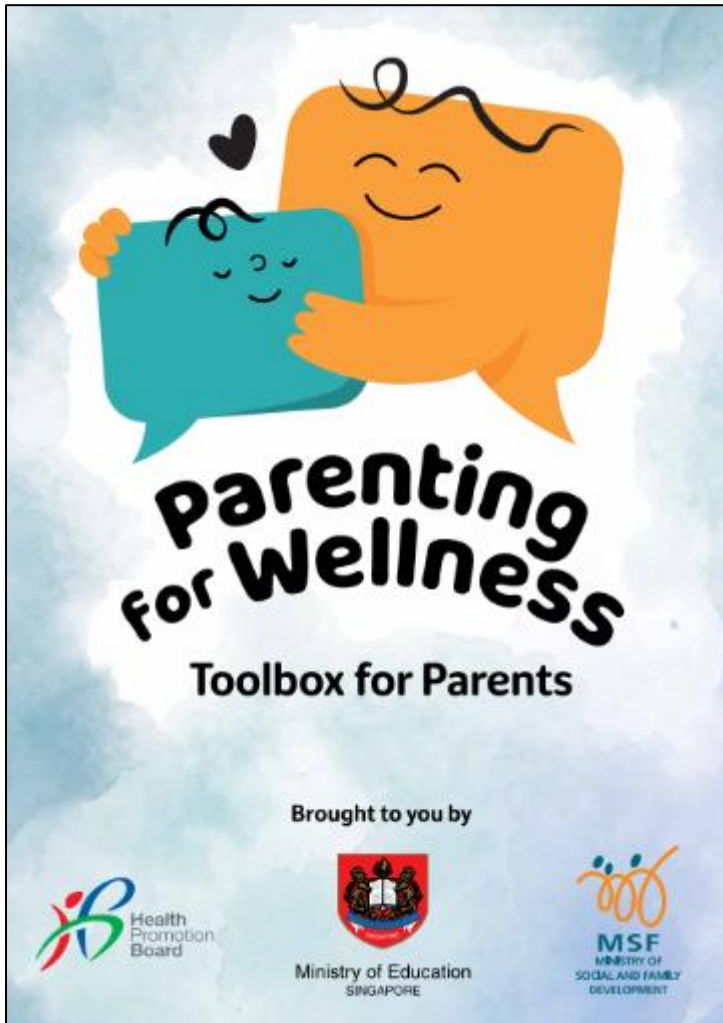
Parent-Child Activity Book is readily available online:

10 TIPS FOR PARENTS to help you navigate your child's first year in primary school.

- Chat with your child
- Boost their confidence
- Practise various scenarios
- Create something interesting
- Thank others for their help
- Pledge to do things together



Latest Resource: Parenting for Wellness Toolbox



An initiative to empower parents with key knowledge and skills to build strong parent-child relationships, strengthen their children's mental well-being and resilience, and parent effectively in the digital age.

The Toolbox for Parents comprises bite-sized practical tips and strategies for parents, such as ways to create a safe and nurturing home environment, build resilience in children, and stay safe online.



School-Home Partnership

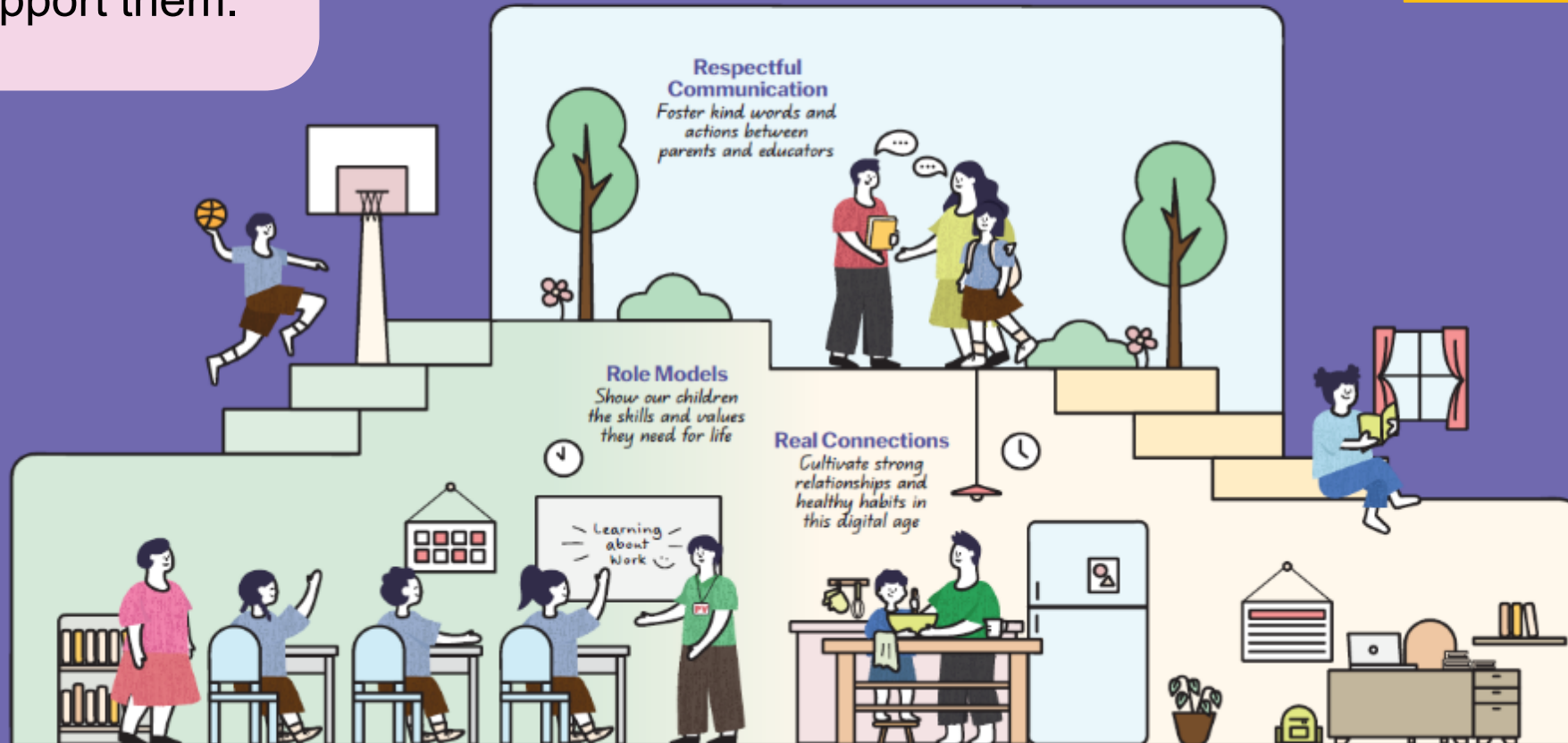
Our children do best when schools and parents work hand in hand to support them.

Guidelines for School-Home Partnership

Raising a Happy, Confident, and Kind Generation Together

Note for schools:

For more information that can be included in this section, please refer to the notes section.



3 areas we can work together on to foster School-Home Partnership

1 Respectful
Communication

2 Role Models

3 Real Connections



Respectful Communication

Foster kind words and actions between schools and educators



Listen to and understand each other's perspectives and concerns regarding each child



Communicate kindly using official channels. Teachers are not required to share their personal mobile numbers



Respect each other's time by communicating during working hours



Note for schools: For more information that can be included in this section, please refer to the notes section.

Role Models

Show our children the skills and values they need for life



Find joy in everyday experiences with our children



Instill confidence by encouraging responsibility and believing in our children's abilities



Model good values in words and actions



Check out this video on MOE YouTube for tips on how parents can support the social-emotional learning of their children.

Note for Schools: For more information that can be included in this section, please refer to the notes section.

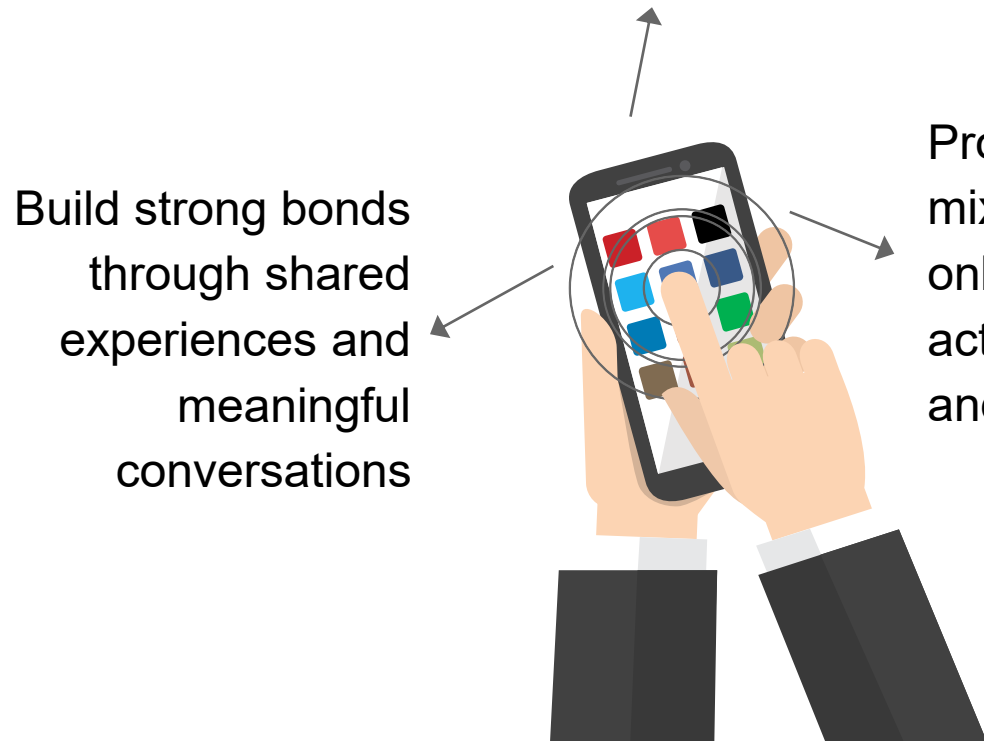
Real Connections

Cultivate strong relationships and healthy habits in this digital age

Establish good habits for our children to stay confident and in control of their technology use

Build strong bonds through shared experiences and meaningful conversations

Provide a balanced mix of engaging online and offline activities, at school and at home





Ministry of Education
SINGAPORE



Join us at MOE Kindergarten – **We Are Hiring!**



Do you have / Do you know someone who has..



**An energetic
personality?**



**A passion to nurture
the next generation?**



**Dedication towards
sparking curiosity?**

Find out more about
our MK careers at

go.gov.sg/becomemke



Join our mailing list to stay
updated of career opportunities

go.gov.sg/moecareersml



**Join MOE Kindergarten as an English Medium or
Mother Tongue Language Kindergarten Teacher**